

GMCC 3 PERSON COED RELAY- FEB 28TH

" WINTER CX IS OVER AND SPRING XC IS ON THE WAY"

BENEFITTING ALABAMA YOUTH CYCLING

Donating 50% of proceeds
(Bring the 2 wheel bike of
your choice xc,cx,
single speed, cruiser...)



Registration

Online \$15 :

www.usacycling.org/register/2016-995

Or

Day of \$20

Schedule:

Registration day of:

7:00 a.m. - 8:30 a.m.

Course open:

7-8:45 a.m.

Seeding Relay(s) 1 and 2:

9:00-9:30 a.m. & 9:45-10:15 a.m.

Semis

10:30-11:15 a.m.

Finals

11:15-12:15 p.m.

Each lap is approx. 8/10 mile.

But it ain't no cakewalk!!!

Expect a sand pit, steep run-up, off
camber, and fun rollercoaster sections.

Can your team make it to the finals???

3 person relay format : Either bring a team or we will assign you to one
Bringing a team ? YOU MUST HAVE 3 people : All Ages Welcome
(VERY IMPORTANT-ONLY ONE Cat 1-3 male or female allowed per team)

Parking Information - offsite within 4/10 mile

Email: scott@creative-concepts.com or FB: Green Mountain Cross

Location: Green Mountain Cross Camp- Irondale Al.
5540 Rex Ridge Ln. 35094

Drop Off and Park!!!
Coolers, tents, chairs,
etc.. See parking
information



LOCATION



5540 Rex Ridge Ln
Irondale, AL 35094



PARKING MAP

Lot # 1 Green Line :

Private Land , approx 15-20 spots

Park closely together , don't block in others

Lot # 2 Orange Line:

Rex Lake Fire Station

Park in designated area(s) only , do not block in others

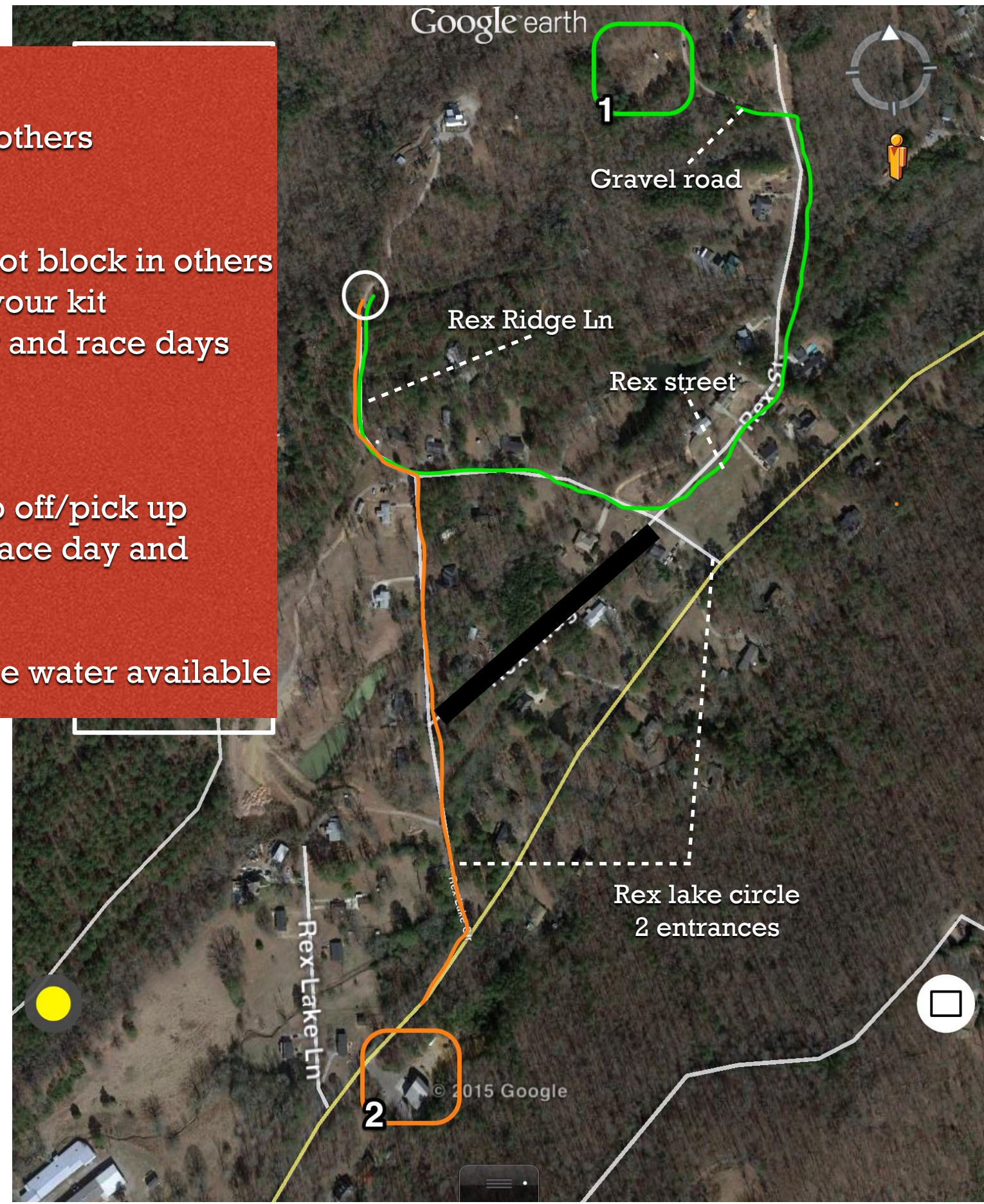
Be discrete when changing in/out of your kit

Lot # 3 available for general overflow and race days

More information to come

Tent, cooler, etc. , and non-rider drop off/pick up
available at driveway entrance (Pre-race day and
between races).

No dogs , port o potties onsite, potable water available



GMCC ADDRESS
5540 Rex Ridge Ln
Irondale, AL 35094